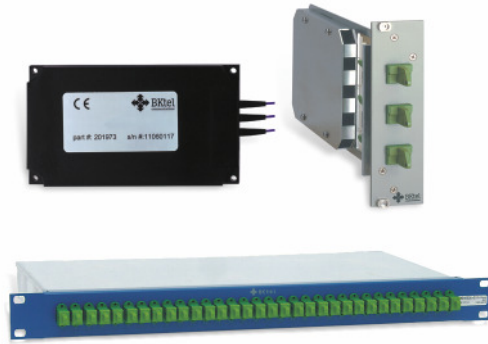


BOM-C-Kxx-yy

OPTICAL ADD/DROP MULTIPLEXER FOR CWDM

Application

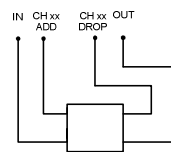
- ▶ Multiplexing and demultiplexing of optical signals in
 - CATV networks,
 - MANs or
 - LANs
- ▶ Available as 'ADD', 'DROP' or 'ADD and DROP' multiplexer:
 - BOM-C-Kxx-A: optical ADD Multiplexer
 - BOM-C-Kxx-D: optical DROP Multiplexer
 - BOM-C-Kxx-AD: optical ADD and DROP Multiplexer
- ▶ Transmission of multiple optical signals via one optical fiber
- ▶ For downstream and upstream applications in optical networks



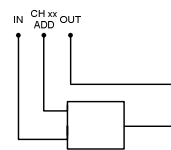
Features

- ▶ Thin-film technology
- ▶ 20 nm ITU grid channel spacing
- ▶ High isolation
- ▶ Low insertion loss
- ▶ Epoxy-free optical path
- ▶ Available in:

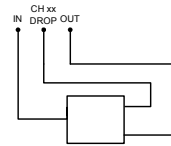
compact housing with pigtails	BOM-C-Kxx-yy
19" - 1 HU housing with adaptors	BOM-C-Kxx-yy-H
19" - 3 HU plug-in unit with adaptors	BOM-C-Kxx-yy-V
1 unit BK module housing	BOM-C-Kxx-yy-BK
- ▶ FC/APC, SC/APC or E2000 connectors



BOM-C-Kxx-AD: optical ADD and DROP Multiplexer



BOM-C-Kxx-A: optical ADD Multiplexer



BOM-C-Kxx-D: optical DROP Multiplexer

Specifications subject to change without notice - DBE_BOM-C-Kxx-yy_230506.doc

Types
BOM-C-Kxx-AD

Typical Performance Data	Unit	
Number of ITU-T-grid channels		1
Channel spacing	[nm]	20
Add/Drop wavelength (ITU-T-channel number)		Kxx
Passband	[nm]	13
Passband @0.5 dB	[nm]	14
Passband flatness	[dB]	0.5
Insertion loss IN – OUT *)	[dB]	1.0
Insertion loss IN – DROP, ADD -OUT *)	[dB]	1.0
Optical isolation IN-OUT *)	[dB]	25
Optical isolation IN-DROP, ADD-OUT *), adjacent channel	[dB]	25
Optical isolation IN-DROP, ADD-OUT *), non adjacent channel	[dB]	45
Return loss	[dB]	45
Operating temperature	[°C]	0 to +65

*) excluding connector loss

Types
**BOM-C-Kxx-A
BOM-C-Kxx-D**

Typical Performance Data	Unit	
Number of ITU-T-grid channels		1
Channel spacing	[nm]	20
Add/Drop wavelength (ITU-T-channel number)		Kxx
Passband	[nm]	13
Passband flatness	[dB]	0.5
Insertion loss IN – OUT *)	[dB]	0.6
Insertion loss IN – DROP, ADD -OUT *)	[dB]	1.0
Optical isolation IN-OUT	[dB]	13
Optical isolation IN-DROP, ADD-OUT *), adjacent channel	[dB]	25
Optical isolation IN-DROP, ADD-OUT *), non adjacent channel	[dB]	45
Return loss	[dB]	45
Operating temperature	[°C]	0 to +65

*) excluding connector loss