

CABLEwatch EMS

ELEMENT MANAGEMENT SYSTEM FOR HFC, RFOG AND RF OVERLAY NETWORKS

Functional Description

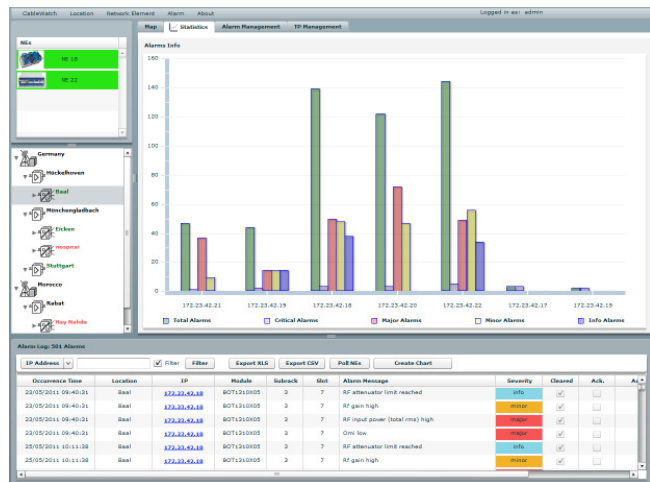
CABLEwatch EMS (Element Management System) is a web client - server application to manage a BKtel HFC, RFOG or RF Overlay network and other HMS standard compliant equipment.

The CABLEwatch EMS allows the operator to manage the entire HFC network via any Flash Player enabled Web-browser.

There is the possibility to connect the network elements via Ethernet SNMP, Ethernet Web-browser (if network element provides a Web-server) and HMTS (Hybrid management termination system).

All configuration, remote inventory and alarm data is stored in a SQL database.

For every client the CABLEwatch EMS server provides effective tools for alarm filtering, configuration management, network modelling and high level remote controlling.



Features

- ▶ Visualisation of the entire network
 - By network location tree view – hierarchy viewer
 - By network location map view – topology viewer
- ▶ Alarm management
 - Alarm log view – that displays the alarms in a table
 - Alarm filtering – selecting alarms by date, type, IP address, ...
 - Alarm statistic – offers the possibility to identify the problematic network elements
- ▶ Network element support
 - All BKtel network element controllers with automatic type recognition
 - HMS compliant network element support of other vendors can be integrated on demand

Technical Data

- Support for Windows and Linux operating systems: e.g. Windows XP/7/2008, OpenSuse, Debian
- Support for SQL based databases: e.g. PostgreSQL, MySQL, etc.
- Modern Graphical User Interface using the Flash technology
- Realtime alarms notifications via the snmp Trap protocol

Requirements

Hardware

CPU: Intel Core 2 Duo or Athlon X2 or higher

RAM: 2 GB or higher

HDD: 250 GB or higher (redundant HDD is recommended)

PORT 162 must be available (not used by other application or blocked by the firewall)

ETH: An Ethernet 100/1000 compatible network interface controller

Software

Operating System: Windows XP/7/2008, OpenSuse 11.x or Debian based distributions

Web Browser: a standard webbrowser with the Flash player plugin 10 or higher
