

CABLEwatch LMT

LOCAL MANAGEMENT TERMINAL FOR HFC NETWORKS

Functional Description

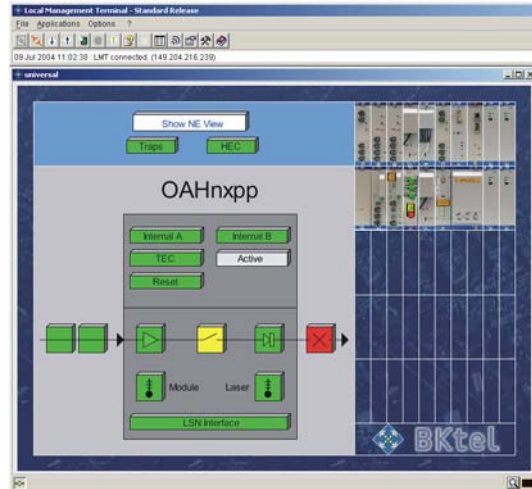
CABLEwatch LMT (Local Management Terminal) provides all functions to operate a single HMS based network element locally.

This device is used by installation or maintenance personnel, connecting it locally to a NE (Network Element) for installation and maintenance purposes. The LMT may also remotely supervise a single NE. In this case it is connected to the LAN and communicates by SNMP messages via the Internet (IP) or via the HMTS (Hybrid Management Termination System) to the NE.

The LMT may be connected to all HMS compliant BKtel 1570BB network elements and to standard HMS compliant vendor NEs after integration.

Additionally the LMT may operate in remote mode by establishing a UDP/IP connection to the HMTS.

The LMT software is also integrated as NE viewer in the CABLEwatch EMS. A rack view can be retrieved for all NEs configured in the EMS.



Standard Features

- ▶ Viewer to display the rack view and module details of NE
- ▶ Configuration of NE, configuration backup
- ▶ Display NE alarm, measurement and inventory data
- ▶ Event logging of alarms
- ▶ SW download function
- ▶ Integrated MIB-browser
- ▶ Password protection

Technical Data

Operating system	Windows 2000 / XP
PC hardware requirements	1 GHz CPU / 256 MB RAM / 10 GB HD / Serial Interface
JAVA package (included on installation CD)	JDK 1.3.1 / JAI 1.1
Security	Dongle