

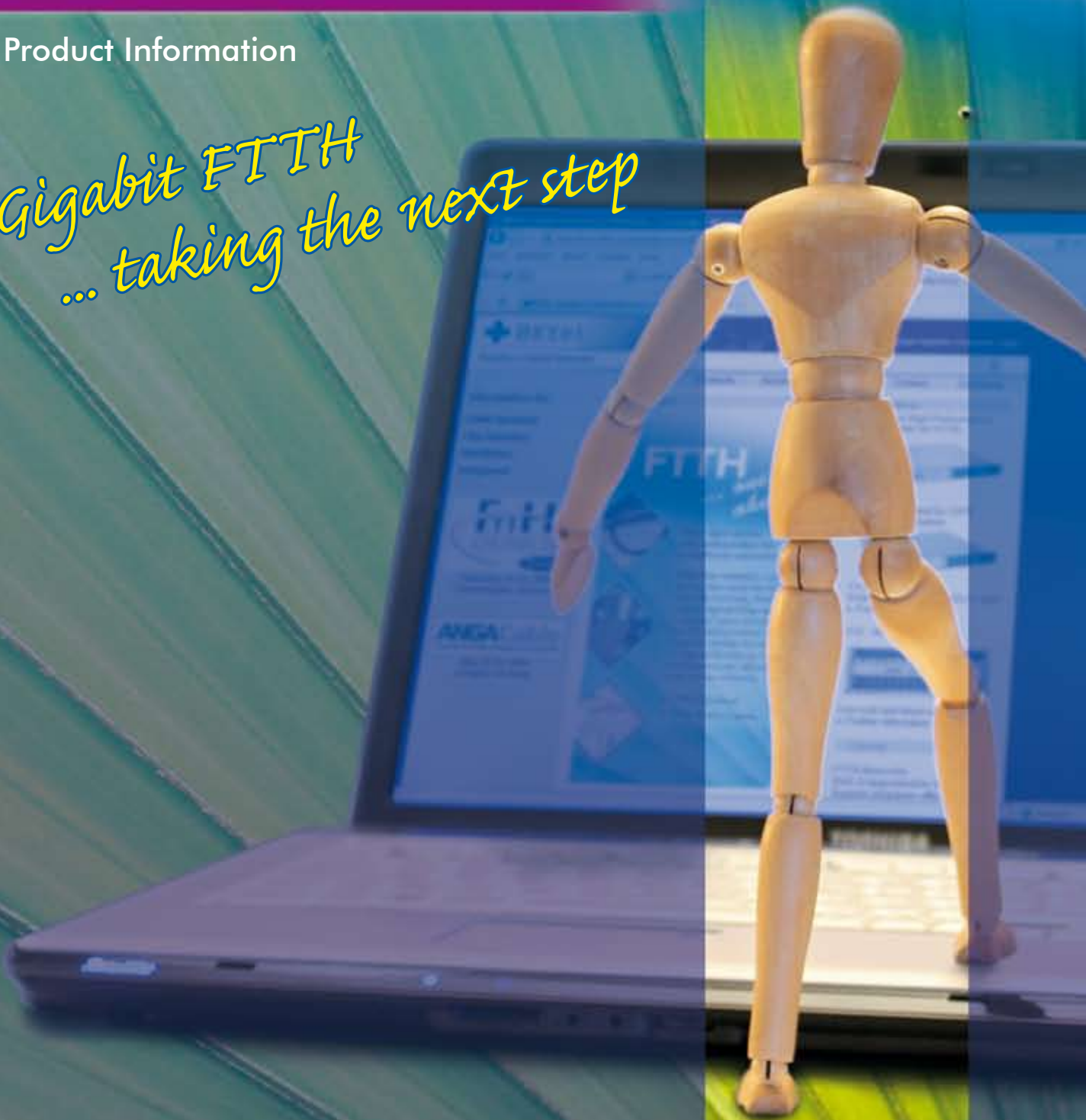


BKtel

# XON1500

Product Information

*Gigabit FTTH  
... taking the next step*



BKtel's new customer premises unit XON1500 enables Gigabit Ethernet connectivity in next generation point-to-point FTTH networks. It allows the increase of the data rate up to 1 Gbps, providing the subscriber with the experience of a new broadband dimension – ultra high speed surfing, Video-on-Demand in HD-quality and VoIP telephony. The next step for FTTH access networks is made possible by latest optical Ethernet technology and high performance fiber networks.



**XON1500.SVIC:**  
All Features in one unit.

## Multirate WAN Interface: Flexible Network Upgrade to Gigabit Data Rate

Flexibility is one of the most obvious advantages of the FTTH point-to-point network architecture. The XON1500 supports this flexibility with its multi-rate optical WAN interface. The CPE can be used with Fast Ethernet and upgraded any time to Gigabit Ethernet without any hardware exchange at the subscribers premises.

The XON1500 products are available with additional unique features:

### Dual Phone Functionality: POTS/ISDN

Especially ISDN subscribers benefit from the easy handling of XON1500. ISDN phones or a complete ISDN PBX for small business solutions can directly be connected. Up to 8 phones can be added via an S<sub>0</sub>-Bus. Phone calls will be converted into HD VoIP telephony and transmitted via the IP access network. Alternatively two analog phone ports are provided for common POTS phones.

### The Gateway to Optical Home Networking

Transmission of Gigabit data rates in the home are a serious problem for in-home networks. The XON1500 is prepared for the emerging technologies to address this challenge. It can optionally be equipped with an optical Gigabit LAN interface in order to integrate single network devices with an optical interface or a complete

optical home network can be connected. With a Small Form Factor Pluggable (SFP) optical transceiver module the connection can be made with any type of fiber (SMF, MMF, POF), optical wavelengths and optical connectors.

### RF Video Overlay: Multiple Options for TV-Services

Like all fiber network termination units from BKtel, the XON1500 series is equipped with an optical CATV- or a combined CATV + SAT-TV-receiver. The subscriber is not restricted to analogue PAL signals on his TV set but - by simply using common Set Top Boxes such as terrestrial DVB-T, cable or satellite receivers - also digital TV is available. The advantages for the network operator are evident. He has a wide variety of different business models available from traditional cable TV to simple community antenna sharing. Needless to say that there is no change for the subscribers TV experience; it remains as simple as always.

## Key Features

### Layer 2 Ethernet Switch

- ◆ Multi-rate WAN Interface, 1000Base-BX10 optional 100Base-BX10
- ◆ Four Full Duplex Gigabit Ethernet ports with integrated Ethernet Switch
- ◆ Auto-Negotiation ability to select duplex mode and speed
- ◆ Virtual LAN support (port-based and 802.1q)
- ◆ Quality of Service / Class of Service
- ◆ IGMP snooping v1/v2
- ◆ Rate Limiting Capability
- ◆ One LAN SFP port for Gigabit SFPs

### Telephony with VoIP

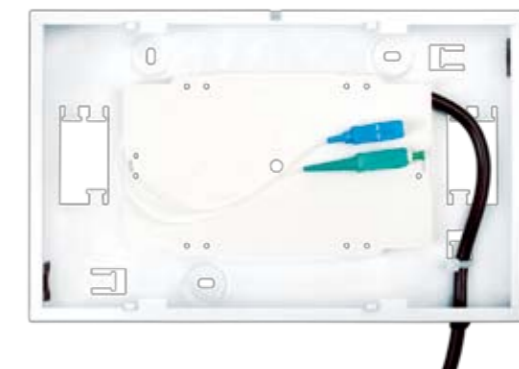
- ◆ Two FXS ports to connect two analog phones
- ◆ Each port has its own SIP-Account for VoIP telephony

### ISDN Module

- ◆ S<sub>0</sub>-Bus for RJ-45 port and spring terminal
- ◆ VoIP signaling with SIP
- ◆ VoIP voice transmission with RTP and G.711 a-law
- ◆ Up to 6 MSNs with each separate SIP-Account
- ◆ S<sub>0</sub>/I.430 ISDN interface, NT mode
- ◆ DSS1 as ISDN D-channel protocol

### Management

- ◆ BKtel Provisioning System
- ◆ Secure Firmware Update (dual image)
- ◆ Customer selectable device startup configuration
- ◆ Remote Diagnostics



**XON10.W - Passive Optical Termination Unit:** Installation Platform for all XON Devices for easy Wall-mounting with integrated Fiber Management.

### Optical CATV Receiver + SAT-TV

- ◆ Optical home receiver for multi channel television and radio signals like AM-VSB, FM and QAM providing a bandwidth of 1 GHz, optional SAT-TV reception up to 2.4 GHz
- ◆ Ultra low noise push-pull technology
- ◆ Very low distortion
- ◆ Wide range of optical input power
- ◆ Single-mode fiber, high return loss optical interface

**Headquater:**

**BKtel communications GmbH**  
Benzstrasse 4  
41836 Hückelhoven-Baal  
Germany  
Phone: +49 (0) 24 33 / 91 22-0  
Fax: +49 (0) 24 33 / 91 22-99

*Office Kornwestheim:*  
**Stammheimer Straße 10**  
70806 Kornwestheim  
Germany  
Phone: +49 (0) 71 54 / 82 70-11  
Fax: +49 (0) 71 54 / 82 70-79

**Representations:**

**BKtel communications Beijing Ltd.  
and BKtel communications GmbH  
Beijing Representation Office**  
Rm. 0711, Sinolife Tower  
56 Xizhimen North Avenue  
Haidian District, Beijing,  
100082 China  
Phone: +86 10 8229 3065  
Fax: +86 10 8229 3224

**BKtel Pacific Rim (Japan) Inc.**  
Katsukou Building 5F  
1-2-8, Hourai-cho, Naka-ku,  
Yokohama, Kanagawa 231-0048,  
Japan  
Phone: +81 45 350 5447  
Fax: +81 45 350 5460

**BKtel local agents:**

France:  
André Balva  
balva@bktel.com

Spain:  
Rafael Leon Linde  
leon@bktel.com

South East Asia:  
Roland Wuerth  
wuerth@bktel.com

USA:  
Harj Ghuman  
ghuman@bktel.com

Australia / New Zealand:  
John Nixon  
nixon@bktel.com

United Arab Emirates:  
Ünal Güzel  
guzel@bktel.com

Internet: <http://www.bktel.com>  
Email: [info@bktel.com](mailto:info@bktel.com)