



Successful introduction:

komro relies on nationwide satellite coverage with Profi-SAT

komro has been the leading municipal telecommunications company in Rosenheim, Germany since 1998. Today it offers more than 26,000 residential and business customers a wide range of modern products in the future-focused markets of Internet, telephony, TV entertainment, location networking and IoT. komro currently offers bundled products with telephony and Internet access of up to 1 Gbit/s via a fiber-optic coaxial broadband network to residential customers throughout the Rosenheim area. With komro's modern network, the city of Rosenheim has one of the most future-proof broadband networks with an already high proportion of fiber optics, which is being steadily increased. For years now, komro has been consistently implementing connections in new buildings using future-proof fiber-optic technology.

With an extensive FTTx range featuring the BKTEL® product portfolio, HUBER+SUHNER has maintained a close and cooperative business relationship with komro for many years and is an important technology supplier for their network expansion.

View into the future

To meet the specific requirements of the local housing association which include the need to offer more extensive TV and media service in a variety of foreign languages, the telecommunications company was looking for a scalable and future-oriented solution that would be used throughout the entire Rosenheim city area. Since a supply of SAT signals already existed for certain apartment **islands**, the focus was now on an area-wide signal supply that could be supplied from four satellite positions thanks to the latest EDFA amplifier technology via one fiber. The optimal solution was the new BKTEL® Profi-SAT system, which was developed in cooperation with ASTRA and Glasfaser ABC. It enables a lossless, bandwidth-independent, optical feed of satellite signals within city networks with a range of up to 25 km and large distributions of more than 10,000 households. The integration of the new BKTEL® Profi-SAT solution into the existing optical komro network was smooth and additionally ensures compatibility with DOCSIS3.1 services.

Revolution in SAT signal transmission

The optical headend platform developed by HUBER+SUHNER is designed for fiber optic distribution of satellite TV signals in modern FTTx networks. The modular concept of the platform allows for the conversion of IF signals of up to four SAT receiving systems into one intensity modulated optical signal each with a high bandwidth of up to 6.5 GHz. The optical signals are in the wavelength range of 1550 nm (DWDM wavelengths) and can thus be optically amplified as required (EDFA technology). The SAT IF signals transmitted with the BKTEL® Profi-SAT platform can be generated directly from the downlink signals of Ku-, Ka- or C-band satellites, for which HUBER+SUHNER can offer RF multiplexer solutions adapted to the application.

The modular 19" BK platform, which has proven itself with large TV and broadband providers, has an installation depth of just 220 mm with 6 U and can therefore also be used practicably with low installation depths. The entire system can be managed and monitored remotely. The efficient and redundant local power supply of 230 VAC ensures fail-safe operation.

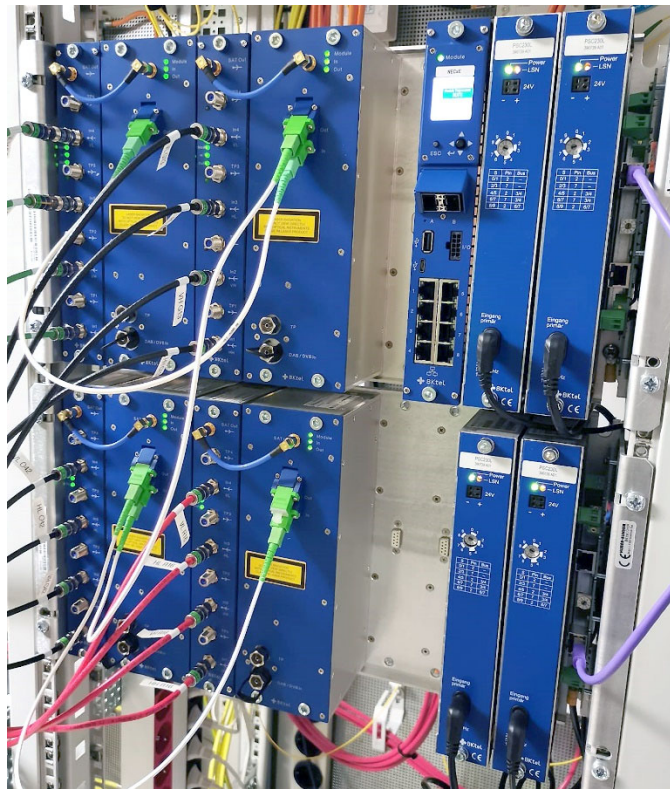
BKTEL® Profi-SAT - Ideal for Municipal and Supraregional SAT-TV Supply

With the new Profi-SAT solution individual residential complexes as well as more than 10,000 households can be reliably supplied. The satellite signals are optically processed and optimized for distribution over long distances to end customers' homes. Simple system additions with optical amplifiers can significantly extend the distance. Up to four orbital positions can be transmitted over one fiber using DWDM multiplexing. This parallel feed additionally ensures signal supply in the event of interference or failure of the IP stream.

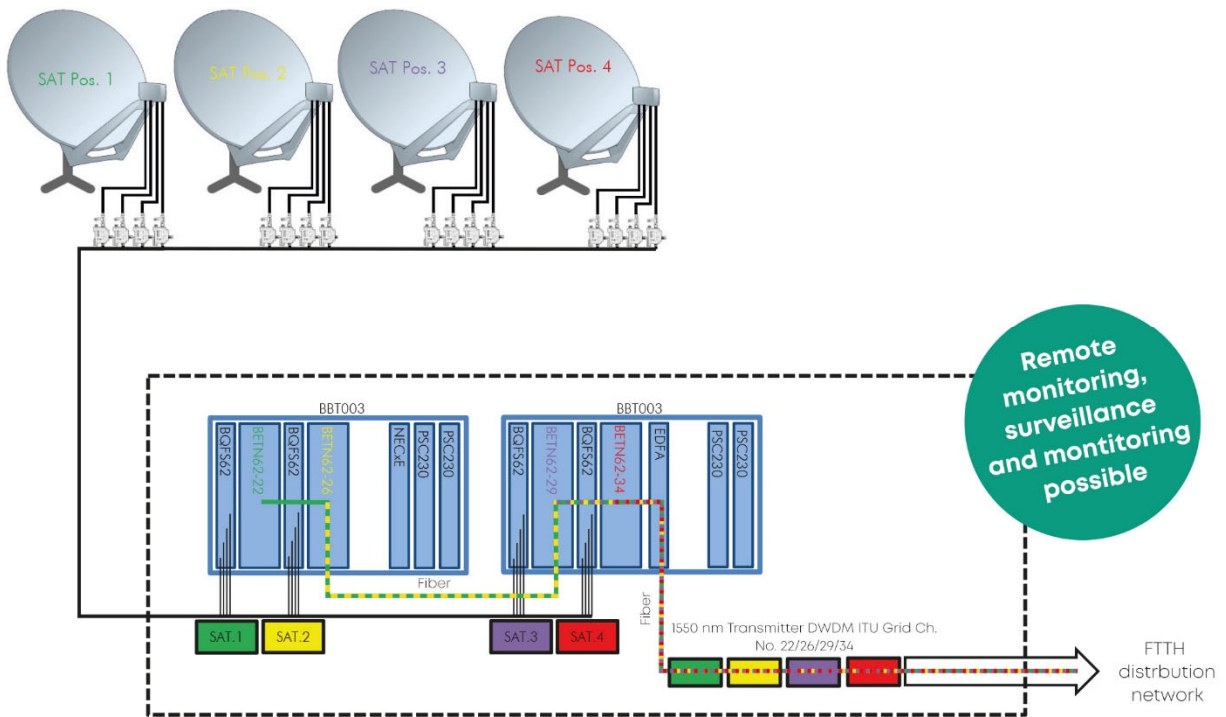
For more information, visit: <https://www.bktel.com/profi-sat-solution.htm>

The advantages of the Profi-SAT system

- Bandwidth-independent, optical feed of SAT signals within city networks and large distributions of >500 connections
- SAT signals are processed in optical form for large distributions and ranges and optionally amplified using EDFA technology
- Up to four satellite positions can be transmitted over one fiber using DWDM multiplexing without the use of additional hardware
- Parallel transmission of telephone and (IP) data services
- Support of point-to-point and PON networks
- Setup of centralized and decentralized distributions
- Modular and expandable 19"/ 6 U concept with low installation depth
- Power supply redundancy
- Management on site or via remote maintenance and monitoring



Caption:
BKTEL® Profi-SAT - the redundant system can supply up to more than 10,000 households with satellite signals (Source: komro)



komro relies on nationwide satellite coverage with Profi-SAT

HUBER+SUHNER BKtel GmbH
hubersuhner.com bktel.com

Contact:

Regina Bonni, Marketing communications manager
Phone: +49 / 24 33 / 91 22 28
regina.bonni@hubersuhner.com